

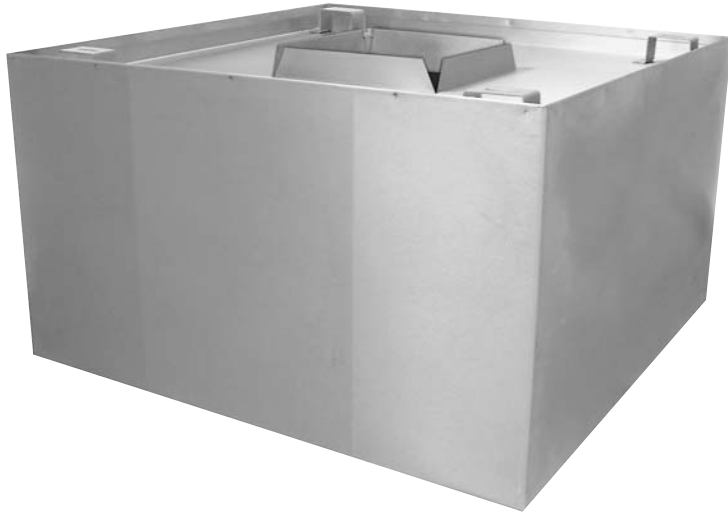


STAINLESS STEEL CONDENSATE HOODS

Item #: _____

Model #: _____

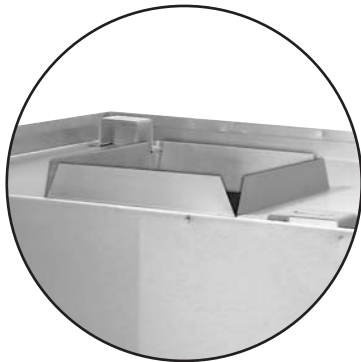
Project #: _____



Model #	L	W	Qty
CH-3636	36"	36"	
CH-4242	42"	42"	
CH-4848	48"	48"	

OPTIONAL MODIFICATIONS	Model #	Size
Specify alternate Collar Location	CH-61	
Additional Length or Width	CH-56	

This item is not UL or NFPA Listed.



8" x 10" vent opening.
Collar is centered 2" in height.

FEATURES:

- Wall and Ceiling Mounting Provision facilitates installation.
- 2" Exhaust Collar.
- 1-1/2" Gutter along bottom perimeter with 3/8" Drain at rear.

CONSTRUCTION:

Flanged Seams are sealed - water tight.

MATERIAL:

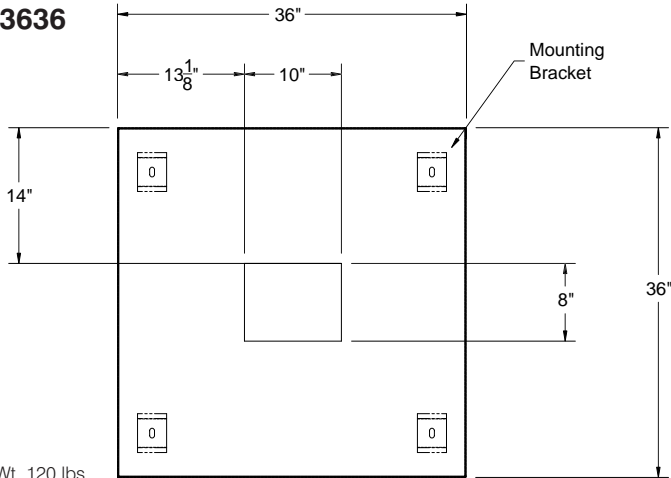
Heavy Duty Gauge Stainless Steel Type "300".

DETAILS and SPECIFICATIONS

ALL DIMENSIONS ARE TYPICAL

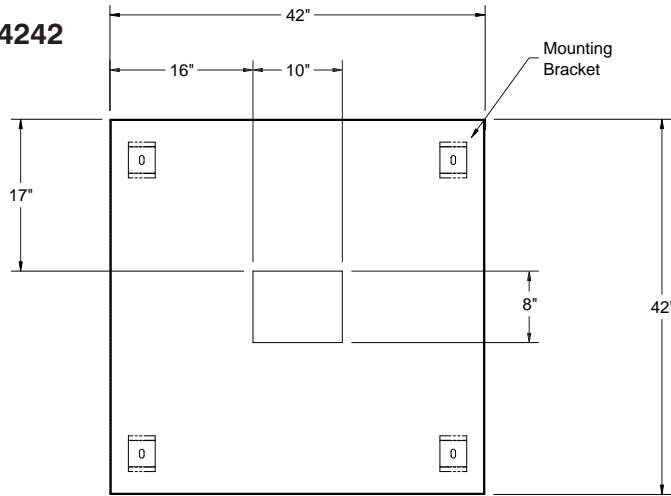
TOL ± .500"

CH-3636



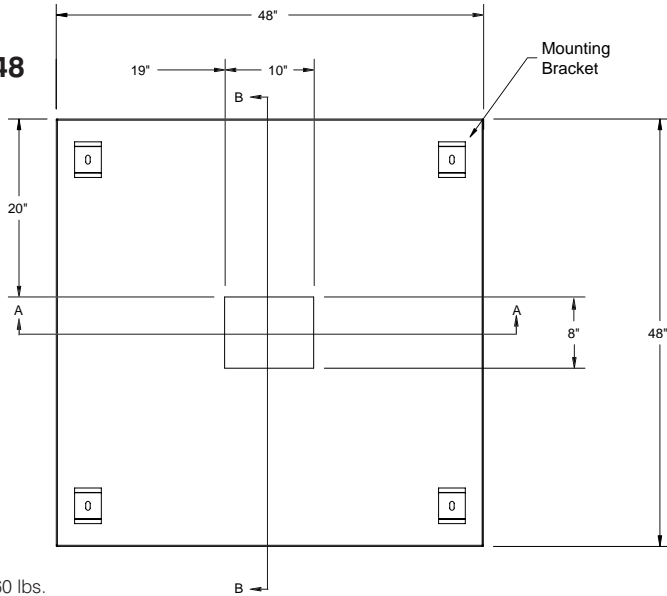
Aprox. Wt. 120 lbs.

CH-4242

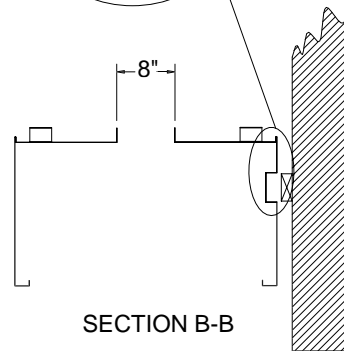
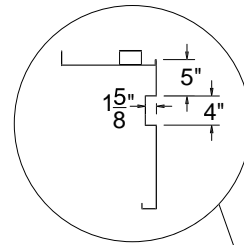
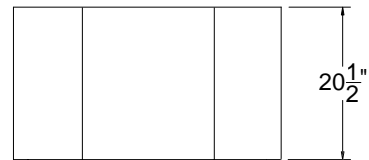
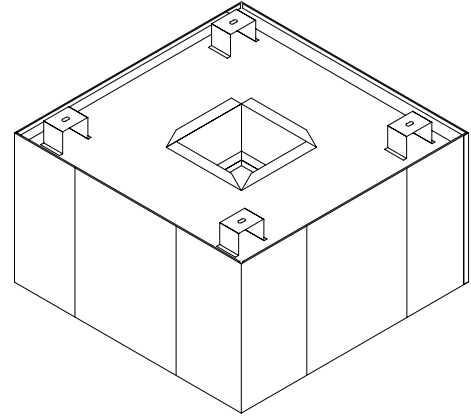


Aprox. Wt. 140 lbs.

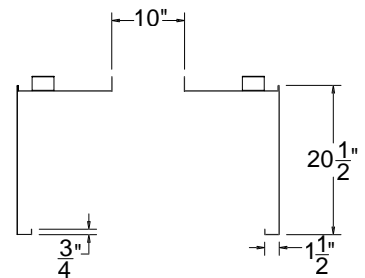
CH-4848



Aprox. Wt. 160 lbs.



SECTION B-B



SECTION A-A

