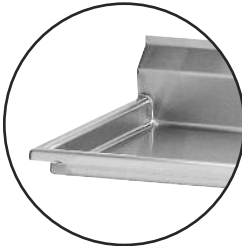




STAINLESS STEEL

# FE Series - 18 Gauge Fabricated Sinks

Item #: \_\_\_\_\_ Qty #: \_\_\_\_\_  
 Model #: \_\_\_\_\_  
 Project #: \_\_\_\_\_



**K-700**  
 Removable  
 Side Splashes  
 Fits Left OR Right Side

**FEATURES:**

- Backsplash has tile edge for ease of installation.
- Sink bowls are 3/4" covered corner and meet NSF requirements.
- Rolled Rim Edge for additional strength.
- Sink Bowls are 12" deep for greater capacity.
- 9" Backsplash.

**CONSTRUCTION:**

- All TIG welded.
- Welded areas blended to match adjacent surfaces and to a satin finish.
- Gussets welded to a die-embossed reinforced plate.

**MATERIAL:**

- 1 5/8" diameter galvanized legs with 1" adjustable plastic bullet feet.
- Entire unit is 18 gauge 304 stainless steel.
- Gussets - galvanized steel.

**MECHANICAL:**

- Supply is 1/2" IPS hot & cold.
- Faucet holes on 8" centers.
- Faucets are not included (**see accessories**).
- Waste drains are 1 1/2" IPS S/S basket type, located in center of sink bowl, and are included.

MODEL #	BOWL SIZE	# of Comp.	O.A. Length	# of Drbds.
FE-1-1812	18"x18"	1	23"	0
FE-1-1812-18R or L	18"x18"	1	38 1/2"	1
FE-2-1812-18RL	18"x18"	2	72"	2
FE-3-1620-18RL	16"x20"	3	84"	2
FE-3-1812	18"x18"	3	59"	0
FE-3-1812-18R or L	18"x18"	3	74 1/2"	1
FE-3-1812-18RL	18"x18"	3	90"	2
FE-3-1824-24RL	18"x24"	3	102"	2
FE-3-2412-24RL*	24"x24"	3	120"	2

\* Requires Two Faucets

**SPACESAVER**

MODEL #	BOWL SIZE	# of Comp.	O.A. Length	# of Drbds.
FE-3-1014-15RL†	10"x14"	3	60"	2

†10" Deep Bowls

ACCESSORIES	Model #	Qty
DRAINS		
FAUCETS		



Customer Service Available To Assist You **1-800-645-3166** 8:30 am - 8:00 pm E.S.T.  
 Email Orders To: customer@advancetabco.com. For Smart Fabrication™ Quotes, Email To: smartfab@advancetabco.com or Fax To: 631-586-2933

**NEW YORK**  
 Fax: (631) 242-6900

**GEORGIA**  
 Fax: (770) 775-5625

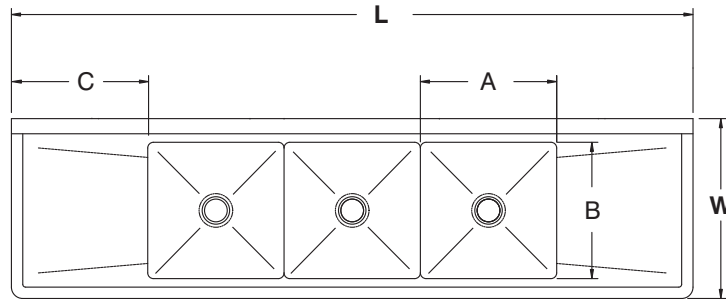
**TEXAS**  
 Fax: (972) 932-4795

**NEVADA**  
 Fax: (775) 972-1578

# DIMENSIONS and SPECIFICATIONS

TOL Overall: ± .500" Interior: ± .250"

ALL DIMENSIONS ARE TYPICAL



MODEL #	Length L	Width W	Bowl Size A & B	Drbd. Length C	# of Drbrds.	Drbd. Location	Wt
FE-1-1812	23"	23.75"	18" x 18"	N/A	0	None	42 lbs.
FE-1-1812-18R or L	38 1/2"	23.75"	18" x 18"	18"	1	R or L	57 lbs.
FE-2-1812-18RL	72"	23.75"	18" x 18"	18"	2	R & L	84 lbs.
FE-3-1620-18RL	84"	25.75"	16" x 20"	N/A	2	R & L	105 lbs.
FE-3-1812	59"	23.75"	18" x 18"	N/A	0	None	90 lbs.
FE-3-1812-18RorL	74 1/2"	23.75"	18" x 18"	18"	1	R or L	102 lbs.
FE-3-1812-18RL	90"	23.75"	18" x 18"	18"	2	R & L	110 lbs.
FE-3-1824-24RL	102"	29.75"	18" x 24"	24"	2	R & L	250 lbs.
FE-3-2412-24RL*	120"	29.75"	24" x 24"	24"	2	R & L	300 lbs.

\* Requires Two Faucets

## SPACE SAVER

MODEL #	Length L	Width W	Bowl Size A & B	Drbd. Length C	# of Drbrds.	Drbd. Location	Wt
FE-3-1014-15RL†	60"	19.75"	10" x 14"	15"	2	R & L	85 lbs.

†10" Deep Bowls

