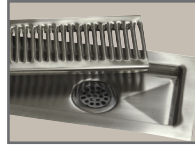


TOP MODIFICATIONS



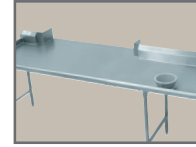
TA-56
5" NSF Partition



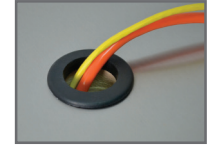
TA-523
Drop-In Urn Trough



CDR-5
Condiment Holder



TA-84
Pass-Thru



TA-108
Grommet For Cords

QTY.

_____	CDR-5	Condiment Holder (Accommodates 5 Bins)
_____	TA-1	Notch Backsplash For Roll Up Door w/ Pass-Thru
_____	TA-3	Stainless Steel Hat Channel & Gusset Upgrade
_____	TA-7	10" Partial Splash
_____	TA-8	Column Notch in Rear Splash (Includes Splash)
_____	TA-10	5" Partial Splash
_____	TA-12	Countertop Edge
_____	TA-22	Square Edge Table
_____	TA-28	Cut-Out For Cold Well. Includes Louvered Doors
_____	TA-29	16 Ga. 304 Rear Splash Capping Strip w/Adhesive Backing
_____	TA-30	1-1/2" Side Splash
_____	TA-30A	1-1/2" Turn Up For Table Tops
_____	TA-31	5" Side Splash
_____	TA-32	10" Side Splash
_____	TA-34	Top Cut-Out
_____	TA-34A	Top Cut-Out for Undermount Well
_____	TA-35	Splash Cut-Out
_____	TA-41	Poly-Vance 5/8" Cutting Board
_____	TA-56	5" NSF Partition
_____	TA-56A	18" NSF Partition
_____	TA-57	Prepare Welded Field Joint (Welded in field by others)
_____	TA-57A	Bolted Field Joint (Bolted in field by others)
_____	TA-57B	Hairline Field Joint
_____	TA-58	Stepdown to 24" Working Height
_____	TA-64	Urn Trough (Factory installation only)
_____	TA-75	Mitered Edge
_____	TA-76	Paint on Sound Deadening
_____	TA-79	Flour Trough (Factory installation only)
_____	TA-82	Scrap Chute (6" dia. opening)
_____	TA-84	Simple Pass-Thru
_____	TA-87	Enclosed Rear Splash
_____	TA-91	Poly Retaining Clips Includes TA-22 (S/S top table)

QTY.

_____	TA-93	Wall Brackets (Includes 2. For 5" & 10 1/2" splash only)
_____	TA-96A	Can Opener Provision for Openers with Bolt-on Base (Customer to provide location)
_____	TA-96B	Can Opener Surface Mount Provision with 4" S/S Tube for Openers w/o Base (Customer to provide location)
_____	TA-96C	Can Opener Spacer Plate Provision for Use on Tables With Countertop Edge & Can Opener Base (Customer to provide location)
_____	TA-100	Bull Nose All Sides of Worktable
_____	TA-101	Rear Tray Lock
_____	TA-106	Mirror HI-LITE Edge
_____	TA-107	Vacuum Breaker Holes on Tables (Includes Backsplash with 2" Return)
_____	TA-108	2" Hole with Grommet for Appliance Cord
_____	TA-112	Hubble Outlet
_____	TA-113	Notch Top for Buyout Unit
_____	TA-130	Cutlery Dispenser Holder (Undercounter Mounted)
_____	TA-135	Plate Shelf (Undercounter Mounted)
_____	TA-366A	Heavy duty Understructure Top
_____	TA-502	Install Advance Tabco Hot Food Unit In Work Table Top (Requires TA-34 Top Cut-Out & TA-27 Control Panel. Does not include wiring. Consult factory)
_____	TA-521	Drop-In urn Trough 1'
_____	TA-522	Drop-In urn Trough 2'
_____	TA-523	Drop-In urn Trough 3'
_____	TA-524	Drop-In urn Trough 4'
_____	TA-525	Drop-In urn Trough 5'
_____	TA-526	Drop-In urn Trough 6'
_____	TA-527	Drop-In urn Trough 7'
_____	TA-528	Drop-In urn Trough 8'
_____	TA-529	Drop-In urn Trough 9'
_____	TA-550	Install Customer Supplied Buyout Items (Does not include wiring. Consult factory)
_____	TA-551	Installation of Hot Food Wells. (Requires TA-34 Top Cut-Out & TA-27 Control Panel. Does not include wiring. Consult factory)

TABLE MODIFICATIONS & ACCESSORIES

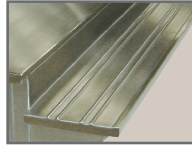
BASE MODIFICATIONS



TA-39
Louvered Hinged Doors



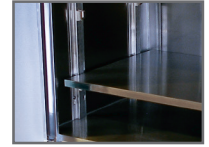
TA-73
Drop-Down Tray Slide



TA-74
Solid Tray Slide



TA-92A
Apron w/ Lever Handle Support



TA-116
Adj. Mid-Shelf

QTY.

- ___ **TA-4** Removable Access Panel
- ___ **TA-5** Curb Mounting Provision
- ___ **TA-15** Provision for Built In Drawer Warmer
- ___ **TA-23** Welded Set-Up Table/Crating
- ___ **TA-24** Shell Crating
- ___ **TA-27** Control Panel (Must add TA-34A or TA-34B)
- ___ **TA-36A** Sliding/Hinge Stainless Steel Doors
- ___ **TA-36B** 1/2 Height Stainless Steel Hinge Doors
- ___ **TA-36C** Hinged door with Trash Flap
- ___ **TA-37** Stainless Enclosed Base
- ___ **TA-39** 24" Louvered Hinged Doors
- ___ **TA-40** Remove Undershef in Cabinet Base For Slide in Buyout
- ___ **TA-42** Interior Partition (2.5"x30")
- ___ **TA-43** Filler Panel (3"x30" with Flanged Feet)
- ___ **TA-44** K.D. Aluminum Pan Rack Slides (6 slides. Table min. lgth. 30")
- ___ **TA-45** K.D. Aluminum Glass Rack Slides (3 slides. Table min. lgth. 3 feet)
- ___ **TA-46** Door Locks

QTY.

- ___ **TA-48** 12"x12" Cut-Out in Back Panel/Undershef for Plumbing
- ___ **TA-54** Removable Kick Plate
- ___ **TA-55** Remove Back Panel (on Enclosed Base)
- ___ **TA-63** Removable Shelving (In addition to standard shelf & table width)
- ___ **TA-70** S/S Tubular Tray Divider (12" sections)
- ___ **TA-73** Tubular Tray Slide w/Dropdown (Stationary Tray Slide Available. Factory installation only)
- ___ **TA-74** Solid Tray Slide
- ___ **TA-92** 12" Apron (in front of sink)
- ___ **TA-92A** 17" Stainless Steel Apron to Cover Sink Bowls and Support Lever Drain Handles
- ___ **TA-116** Adjustable Enclosed Base Cabinet Mid Shelf- Add to Price of Enclosed Base Table with Fixed Mid Shelf (M) on **Page 42-43**. Shelves Over 36" In Length Require Multiple Sections With Center Partition. For Partial Shelves Add To Price Of Shelf On **Page 60**.
- ___ **TA-130** Cutlery Dispenser Holder (Undercounter Mounted)
- ___ **TA-135** Plate Shelf (Undercounter Mounted)
- ___ **TA-205** Connect Cafeteria Items (Per Joint Between 2 Tables. Requires Casters)

ELECTRICAL & DATA PORT OUTLETS



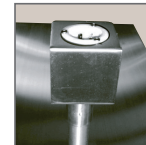
TA-62
Duplex Outlet



TA-62A
GFI Duplex Outlet



TA-62D
GFI Doghouse Outlet



TA-112
Hubble Outlet

QTY.

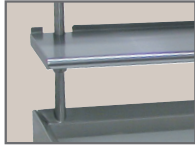
- ___ **TA-62** Standard Duplex Electrical Outlet & Cover Plate (Under Flat Top). NEMA 5-15R
- ___ **TA-62A** GFI Duplex Outlet & Cover Plate in a VKS Splash. NEMA 5-20R
- ___ **TA-62C** GFI Duplex Outlet & Cover Plate Below Shelf Top. NEMA 5-20R

QTY.

- ___ **TA-62D** GFI Duplex Outlet & Cover Plate in a Doghouse. NEMA 5-20R
- ___ **TA-62E** Upgrade Outlet to a NEMA 6-20R or Equiv.
- ___ **TA-112** Hubble Outlet
- ___ **TA-622** CAT-5 Data Port Outlet. Cable Not Included

TABLE MODIFICATIONS & ACCESSORIES

OVERSHELF & POT RACK MODIFICATIONS



TA-9A
1" Turn Up



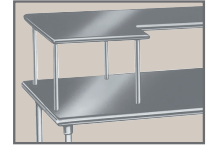
TA-22A
Square Edge



TA-71
Heat Lamp Mounting Provision



TA-100A
Bull Nose



TA-102
24" x 24" Extension

QTY.

- _____ **TA-9A** Partial 1" Turn-Up for all Table Mt. Shelves
- _____ **TA-22A** Square Edge on Oversheff
- _____ **TA-26-10** Welded Wall Shelf Brackets for 10" Wide Shelf
- _____ **TA-26-12** Welded Wall Shelf Brackets for 12" Wide Shelf
- _____ **TA-26-15** Welded Wall Shelf Brackets for 15" Wide Shelf
- _____ **TA-26-18** Welded Wall Shelf Brackets for 18" Wide Shelf
- _____ **TA-47** Shelf Mounting Bracket for Existing Table
- _____ **TA-49** Wall Shelf 2" Offset
- _____ **TA-60** Special Sizing Charge for Shelves (Must Order Larger Unit to be Cut Down to Smaller Size)
- _____ **TA-71** Heat Lamp Mounting Provision
- _____ **TA-78** Additional Lin. Ft. Past 12' For Table Mt. Shelf (For ODS, OTS, TS, DS & WS Shelving only)
- _____ **TA-77** Check Minder Shelf Provision (Factory install only)
- _____ **TA-83** Spice Bins
- _____ **TA-86** Stainless Steel Pot Hooks

QTY.

- _____ **TA-89** Double Sided Plated Pot Hooks (Package of 4)
- _____ **TA-89A** Single Sided Plated Pot Hooks (Package of 4)
- _____ **TA-99** 16 Ga. S/S 304 Upgrade for Wall & Over Shelves
- _____ **TA-100A** Bull Nose All Sides of Shelf
- _____ **TA-100R** Bull Nose Three Sides of Shelf w/ Rear Turn Up
- _____ **TA-102** 24" x 24" Extension for Microwave or Computer Shelf (Add to OTS and ODS Shelves. See page 65)
- _____ **TA-103** 24" Wide PT Shelf (36" Min Length. Mid mount only. PT Series Shelf, See Pg. 73. Add to 18" Wide Shelf)
- _____ **TA-104** Additional Length Over 12' (Add to 18" Shelf. (PA & CU Shelving Only. Max. Length is 14' as Single Piece)
- _____ **TA-98** Stainless Steel Flat Bar in lieu of Chain
- _____ **TA-84A** Knife Rack for Rolled Rim Tables
- _____ **TA-84B** Knife Rack for Poly Top Tables
- _____ **TA-84C** Knife Rack for Square Edge Tables

UNDERSHELF MODIFICATIONS

QTY.

- _____ **TA-9** 1-1/2" Turn-Up for Undershelves
- _____ **TA-17** Upgrade Undersheff to a Marine Edge (Must add TA-23)
- _____ **TA-48** 12"x12" Cut-Out in Back Panel or Undersheff for Plumbing

QTY.

- _____ **TA-94** Upgrade 16 Ga. 304 S/S Undersheff
- _____ **TA-366** Reinforced Understructure For Undershelves

SIZE MODIFICATIONS

QTY.

- _____ **TA-33** Special Working Height
- _____ **TA-59** 36" Wide Equipment Stand
- _____ **TA-6** Extra Length for Standard Tables Over 12' (Tables Over 14' Require Field Joint TA-57)
- _____ **TA-61** Special Sizing Charge (Larger Unit Cut Down to Smaller Size)
- _____ **TA-61A** Special Modification Charge

QTY.

- _____ **TA-65** Enclosed Base Units Over 12' (Open Base Table)
- _____ **TA-66** Enclosed Base Units Over 12' (Sliding Door Units)
- _____ **TA-67** Enclosed Base Units Over 12' (Hinged Door Units)
- _____ **TA-105** Modify Enclosed Base Table w/ Drawers to 24" Width
- _____ **TA-110** Modify Enclosed Base Table w/ Drawers to 36" Width

LEG MODIFICATIONS

QTY.

___	TA-16	Galvanized Leg with Plastic Bullet Foot (34 1/2" Total Length)
___	TA-19	Flanged Stainless Steel Bullet Feet (34 1/2" Total Length)
___	TA-20	Stainless Steel Leg with S/S Bullet Foot (34 1/2" Total Length)

QTY.

___	TA-21	Stainless Steel Bullet Foot
___	TA-72	Leg to Wall Brace (Set per table)
___	TA-95	Upgrade 16 Ga. 304 S/S Legs Only

WORK TABLE CASTERS



STANDARD CASTER FEATURES:

Maintains the standard 35-1/2" working height.
200 lbs. load capacity per caster

OPTIONAL:

TA-25B - Brakes on all casters
TA-25C - Upgrade caster with heavy duty urethane wheel.

	Model#	Description
When Used w/ Stainless Steel Legs	TA-25S-4	Set of 4 (2 w/ Brakes)
	TA-25S-6	Set of 6 (2 w/ Brakes)
When Used w/ Galvanized Legs	TA-25G-4	Set of 4 (2 w/ Brakes)
	TA-25G-6	Set of 6 (2 w/ Brakes)

REPLACEMENT CASTERS:



TA-25 series
200 lbs. load capacity per caster



TA-255 series
300 lbs. load capacity per caster

	Model#	Description
For Work Tables	TA-25	Set of 4 (2 w/ Brakes)
	TA-25A	Set of 6 (2 w/ Brakes)
For Enclosed Base Tables	TA-255P	Set of 4 (2 w/ Brakes)
	TA-255AP	Set of 6 (2 w/ Brakes)

EQUIPMENT STAND CASTERS



STANDARD CASTER FEATURES:

Maintains the standard 24" working height.
5" rubber tires.
200 lbs. load capacity per caster

	Model#	Description
When Used w/ Stainless Steel Legs	TA-25ES	Set of 4 (2 w/ Brakes)
When Used w/ Galvanized Legs	TA-25EG	Set of 4 (2 w/ Brakes)

HEAVY DUTY CASTER FEATURES:

5" urethane wheels.
1200 lbs. load capacity per caster



Model#	Description
TA-255	Set of 4 (2 w/ Brakes)
TA-256	Set of 6 (2 w/ Brakes)

Contact Our SMART FABRICATION™ Department for more information at 800-645-3166 or email in your specifications to smartfab@advancetabco.com