

Product Specifications

Non-Refrigerated Self-Service Pastry Case

CSF4231

Lengths include end panels
 42"L x 36-1/2"D x 65-1/4"H



MODEL SHOWN: CSF4231

NOTE: HOLDS (8) 18" X 26" TRAYS. TRAYS NOT PROVIDED WITH CASE

STANDARD FEATURES

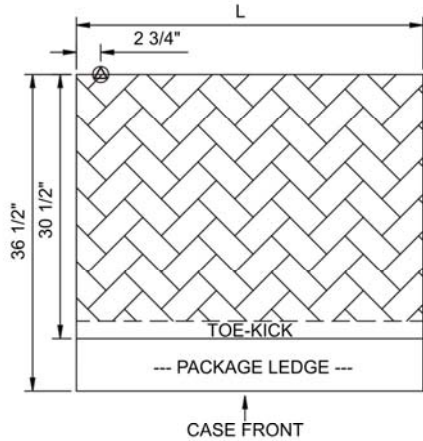
- 12" straight blade power cord
- Black interior
- Black trim
- Glass ends
- Glass swinging front doors
- Levelers
- Light switch in base
- T-8 side lights
- Tray support, non-lighted shelves

Features	Standard	Options
EXTERIOR COLOR	<input type="checkbox"/> Painted - Gray	<input type="checkbox"/> Laminated (non-premium) Confirm pattern/grain direction <input type="checkbox"/> Laminated (premium) Confirm pattern/grain direction <input type="checkbox"/> Painted - Black
BASE	<input type="checkbox"/> Base w/package ledge	<input type="checkbox"/> Base w/storage door <input type="checkbox"/> Base w/storage door & ledge
GRAPHICS	<input type="checkbox"/> None	<input type="checkbox"/> Front door graphics (customer supplied) <input type="checkbox"/> Header sign graphics (customer supplied) <input type="checkbox"/> Header sign, plain
UPPER REAR	<input type="checkbox"/> Solid back panel	<input type="checkbox"/> Clear glass rear swinging doors w/o lock <input type="checkbox"/> Mirror rear swinging doors w/o lock
MISCELLANEOUS		<input type="checkbox"/> Second year parts & labor warranty

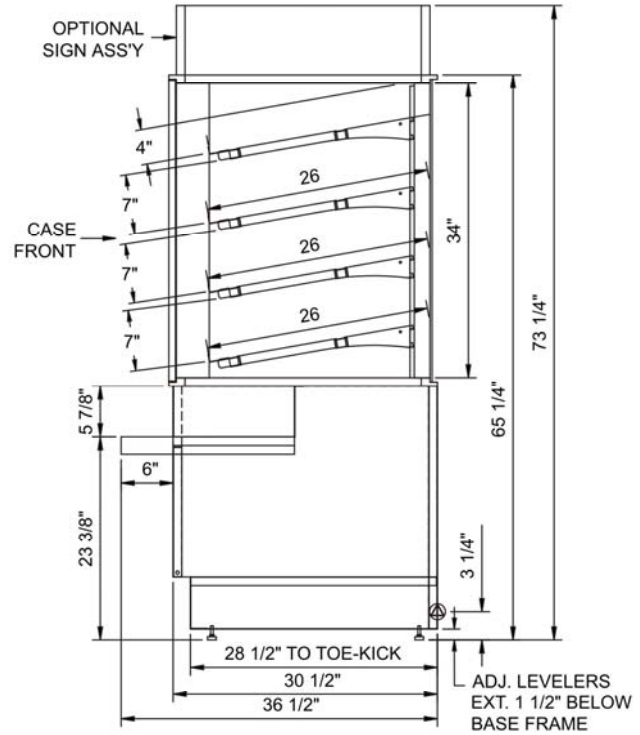
Product Specifications

Intended Environment: Type I - Designed to operate in ambient conditions of 75°F with 55% relative humidity unless noted otherwise in system information below.	
Zone	Integrated Prod Temp ° F
All	Ambient

PLAN VIEW



SIDE VIEW



NOTE: ALL DIMENSIONS APPROXIMATE

- ELECTRICAL JUNCTION BOX (SUPPLIED WITH 6" LEADS OR POWER CORD).
- LOCATION OF DRAIN TUBE FOR REMOTE REF. ONLY (SUPPLIED WITH 3/4" OR 1 1/2" PVC TUBE).

- REFRIGERATION LINE CONNECTION.
- REMOTE FLOOR SINK & UTILITIES ACCESS AREA.

- SELF-CONTAINED CASE SERVICE ACCESS AREA.
- DRY CASE SERVICE ACCESS AREA.

Model Technical Specifications

Model	L"	L1"	L2"	System Circuit Volts	Phs	Freq	Amps ***	Watts	Wires	NEMA Plug	SST	BTUH	Ship Wt	Frt Cls		
CSF4231	N/A	42.00	.00	Ambient	Circuit #1	110-120	1	60	0.30	34	2+G	5-15P	N/A	N/A	500	125

*** Does not include electric defrost on freezer models.

Regulatory Approvals:	
All Models	ETL Listed to UL 65 ETL Sanitation to NSF 2

Important Notes:

- 1) ELECTRICAL NOTE: If GFCI is required, a GFCI breaker MUST be used in lieu of a GFCI receptacle.
- 2) 37 1/2" minimum door entry clearance required (without shipping skid).
- 3) Units are supplied with levelers. They must be adjusted during installation to ensure the unit is level and plumb. Dimensions reflect levelers extended 1 1/4".

