

**VULCAN****VCCG SERIES  
HEAVY DUTY GAS GRIDDLES**

Model VCCG36

**SPECIFICATIONS**

Heavy duty gas griddle, Vulcan-Hart Model No. \_\_\_\_\_. Stainless steel front, sides and front top ledge. Fully welded stainless and aluminized steel chassis. 14.7" cooking height on 4" legs. 1" polished steel griddle plate with top seam welding. Stainless steel back and tapered side splashes. Energy-efficient 24,000 BTU/hr. infrared burner for every 12" of griddle width. Every 12" griddle cooking zone is independently controlled by solid state temperature and electronic ignition system with diagnostic feature. Temperature adjusts from 150° to 550° F. Electronic ignition with pilot safety system. High capacity 6 quart stainless steel grease drawer. 120V 50/60Hz 2 amp single phase with NEMA 5-15 USA plug. 3/4" rear gas connection and internal gas pressure regulators.

CSA Design Certified. NSF Certified.

**SPECIFY GAS TYPE WHEN ORDERING.**  
**SPECIFY ALTITUDE WHEN ABOVE 3,999 FT.**

- VCCG24** 24" w x 24" d griddle plate
- VCCG36** 36" w x 24" d griddle plate
- VCCG48** 48" w x 24" d griddle plate
- VCCG60** 60" w x 24" d griddle plate
- VCCG72** 72" w x 24" d griddle plate

**STANDARD FEATURES**

- Stainless steel front, sides and front top ledge.
- Fully welded stainless and aluminized steel chassis.
- 14.7" cooking height on 4" adjustable legs.
- 1" thick polished steel griddle plate with top seam welding.
- Stainless steel 4" back and tapered side splashes.
- Energy-efficient 24,000 BTU/hr. infrared burner for every 12" of griddle width.
- Every 12" griddle cooking zone is independently controlled by solid state temperature and electronic ignition system with diagnostics.
- Chrome plated knob guards.
- Temperature adjusts from 150° to 550° F.
- Electronic ignition with pilot protection system.
- High capacity, stainless steel grease drawer (6 quart). 60" and 72" models have two grease drawers.
- 3/4" rear gas connection and internal gas pressure regulators.
- 120V 50/60 Hz. 2 Amp single phase with NEMA 5-15 USA plug.
- One year limited parts and labor warranty.

**OPTIONS**

- Side grease models with 3.75 gallon grease drawer.
- Cutting board, condiment rail, plate rail and banking strip accessories.
- Grooved steel plate.
- Rapid Recovery™ griddle plate (150-450° F controls, 60" maximum length).
- Chrome griddle plate (not offered with top seam welding).

**VULCAN**

a division of ITW Food Equipment Group LLC

P.O. Box 696 ■ Louisville, KY 40201 ■ Toll-free: 1-800-814-2028 ■ Local: 502-778-2791 ■ Quote &amp; Order Fax: 1-800-444-0602

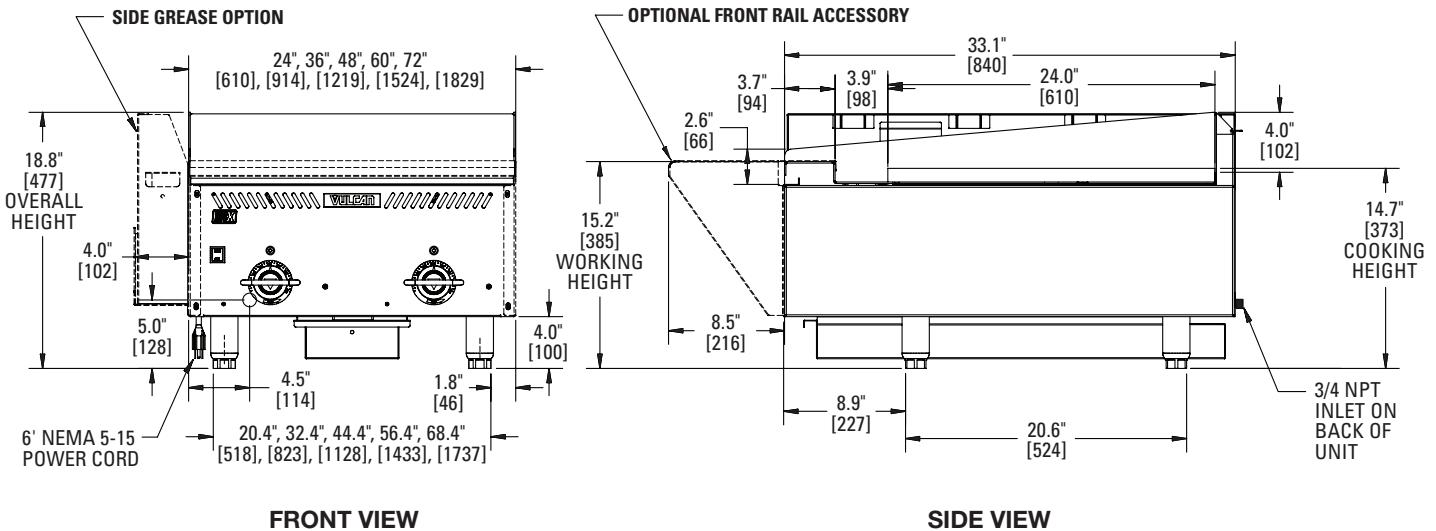


**VCCG SERIES  
HEAVY DUTY GAS GRIDDLES**

**INSTALLATION INSTRUCTIONS**

- Internal gas pressure regulators are supplied with the unit;  
Natural Gas 4.0" (102 mm) W.C.  
Propane Gas 10.0" (254 mm) W.C.
- All models require a 6" (152 mm) clearance at both sides and rear adjacent to combustible and 0" from non-combustible constructions. All models require a 4" (102mm) bottom clearance and must be installed with minimum 4" legs.
- These units are manufactured for installation in accordance with ANSI/NFPA-70, National Electrical code.  
An adequate ventilation system is required for Commercial Cooking Equipment (NFPA No. 96). Information may be obtained by writing to the National Fire Protection Association, Batterymarch Park, Quincy, MA 02169.

- These units are manufactured for installation in accordance with National Fuel Gas Code, ANSI-Z223.1/NFPA #54 (latest edition). Copies may be obtained from The American Gas Association, Accredited Standards Committee Z223 @ 400 N. Capital St. NW, Washington, DC 20001, or the Secretary Standards Council, NFPA, 1 Batterymarch Park, Quincy, MA 02169-7471.  
**NOTE: In The Commonwealth of Massachusetts**  
All gas appliances vented through ventilation hood or exhaust system equipped with a damper or with a power means of exhaust shall comply with 248 CMR.
- This appliance is manufactured for commercial installation only and is not intended for home use.



MODEL	WIDTH	DEPTH	OVERALL HEIGHT*	COOKING HEIGHT*	NO. OF BURNERS	TOTAL BTU/HR.	NO. OF DRAWERS	APPROX. SHIP. WT.
VCCG24	24"	33.1"	18.8"	14.7"	2	48,000	1	380 lbs./172 kg.
VCCG36	36"	33.1"	18.8"	14.7"	3	72,000	1	475 lbs./215 kg.
VCCG48	48"	33.1"	18.8"	14.7"	4	96,000	1	575 lbs./261 kg.
VCCG60	60"	33.1"	18.8"	14.7"	5	120,000	2	665 lbs./301 kg.
VCCG72	72"	33.1"	18.8"	14.7"	6	144,000	2	855 lbs./388 kg.

\*These are nominal dimensions and can vary by +1.75" with adjustable legs.  
(Dimensions in parenthesis are in millimeters)



a division of ITW Food Equipment Group LLC

P.O. Box 696 ■ Louisville, KY 40201 ■ Toll-free: 1-800-814-2028 ■ Local: 502-778-2791 ■ Quote & Order Fax: 1-800-444-0602

**NOTE:** In line with its policy to continually improve its products, Vulcan reserves the right to change materials and specifications without notice.